

### About this installation guide

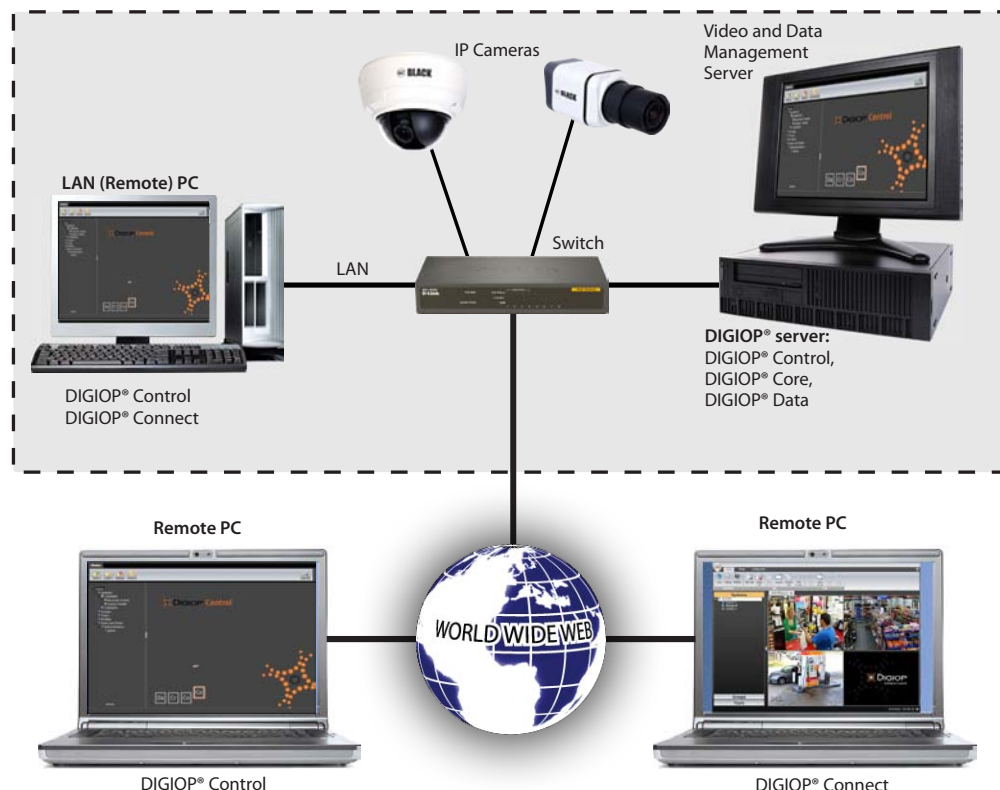
Use this document as a guide to install your DIGIOP ELEMENTS™ software system. It includes procedures to install your video and data management server (DIGIOP® Server), and DIGIOP® Connect software for monitoring the server remotely.

### DIGIOP ELEMENTS™ System Overview

DIGIOP ELEMENTS™ consists of four software components: DIGIOP® Core, DIGIOP® Data, and DIGIOP® Control, which comprise the DIGIOP® Server elements, and DIGIOP® Connect, installed on remote PCs and used for monitoring of the system.

- **DIGIOP® Core:** An expandable video recording platform that provides real-time recording of IP cameras. It can be configured to auto-discover IP cameras installed on your network and to display live video as it's recorded, or to run in the background and archive video data.
- **DIGIOP® Data:** A data management software that integrates external data with video recorded by DIGIOP® Core. This information can be retrieved and displayed with DIGIOP® Connect. It can integrate video with retail Point-of-Sale (POS), Electronic Access Control (EAC), etc.
- **DIGIOP® Control:** A web-based administration portal for DIGIOP® Servers that enables you to configure and manage a single- or multi-site deployment of DIGIOP® video and data management systems. DIGIOP® Control includes: add and configure IP cameras, set user privileges, establish global and local level permissions for systems, cameras, and data streams, etc. DIGIOP® Control can be accessed directly on your DIGIOP® Server, or from a remote PC through an Internet browser.
- **DIGIOP® Connect:** Is a unified dashboard that displays both video and data intelligence on a single admin portal, enabling remote monitoring of both single- and multi-site systems. It provides search tools including thumbnail, timeline, and replay search, digital zoom, tours, etc. enabling you to quickly locate, save and export video and data. DIGIOP® Connect is a stand-alone Microsoft® Windows®-based application. It can be used on a PC with network access to the DIGIOP® Server.

The four DIGIOP ELEMENTS™ components, with the complete product documentation set, are included on the Application disk.



Typical DIGIOP® NVR System



# 1 System Requirements

Before installing DIGIOP ELEMENTS™, ensure that your DIGIOP® Server hardware and the remote PCs for DIGIOP® Connect meet the following requirements.

## DIGIOP® Server minimum requirements:

- CPU: 2.8 GHz, Intel Core 2 Duo (E7400)
- RAM: 2 GB (4 GB Preferred)
- Video Card: 256 MB
- OS: Microsoft Windows 7 Home Premium
- HDD: 250 GB, 7200 RPM
- DVD disk drive

## Remote PC (for DIGIOP® Connect) minimum requirements:

- CPU: 2.8 GHz, Intel Core 2 Duo (E7400)
- RAM: 2 GB (4 GB Preferred)
- Video Card: 256 MB
- OS: Microsoft Windows XP Professional
- HDD: 250 MB
- DVD disk drive

DIGIOP ELEMENTS™ Server components can operate on computers with lower specifications, but its performance is highly dependent upon number of cameras, camera resolution, and recorded frame rates. For more information about system requirements, refer to:

[www.digiop.com/elements\\_sysreq](http://www.digiop.com/elements_sysreq)

# 2 Load the Application Disk

- A. Start your surveillance server (Windows 7) computer and login as a user with full administrative privileges.
- B. Load the DIGIOP ELEMENTS™ Application disk into a DVD drive on your surveillance server. The following window will open.



If your DVD drive is not configured to autorun disks, or the window above does not appear, open a file explorer and double click on the DVD file named [runApplicationCD.exe](#).

**NOTE:** This DVD includes the complete DIGIOP ELEMENTS™ documentation set. You can access by clicking the [View Documentation](#) bar.



### 3 Install the DIGIOP ELEMENTS™ Server

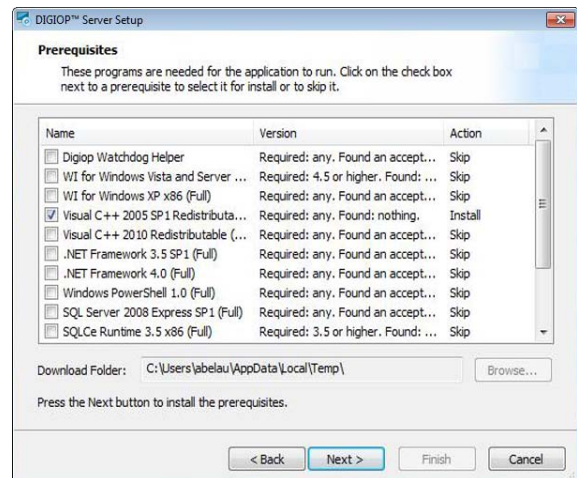
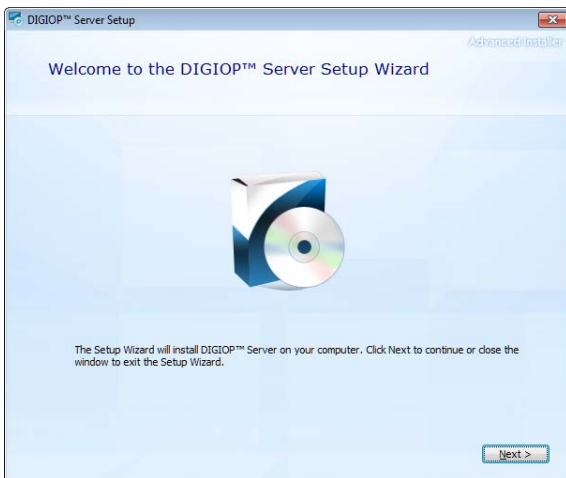
- A. Click the bar labeled **Install Software**.



- B. Click the box on the left labeled **DIGIOP ELEMENTS™ Server**, then click the button **Install DIGIOP ELEMENTS™ Server**.

### 4 Run the DIGIOP® Server Setup Wizard

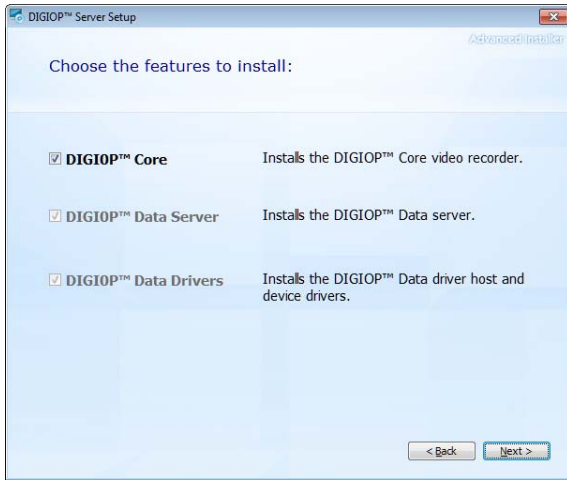
- A. After extracting the main application files, the installer will open the **DIGIOP® Server Setup Wizard**. Click **Next** to continue.
- B. If prerequisite software components are needed, a window similar to the one below may appear. If so, click **Next** to continue, then follow the on-screen instruction to complete the installation. Internet access is required.



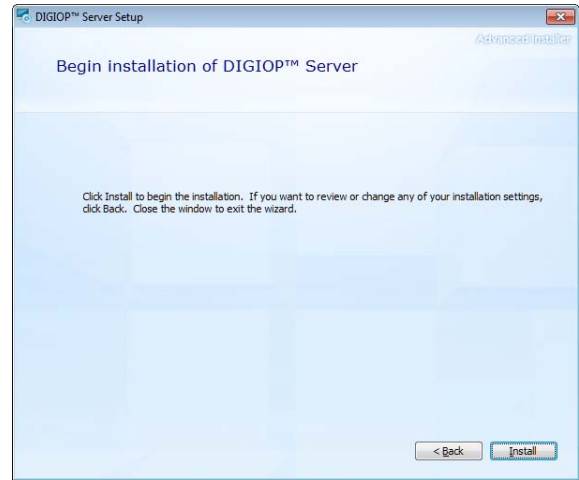
**NOTE:** Installation of some prerequisite software may require a system restart.



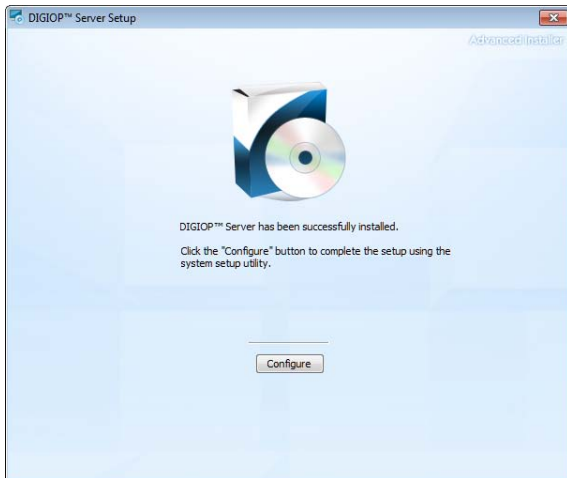
C. In the **Choose the features to install** window, select all features listed, then click **Next** to continue.



D. In the **Begin installation ...** window, click **Install** to continue.



E. Allow the installation to progress until the following window opens. Click **Configure** to setup DIGIOP® Server.





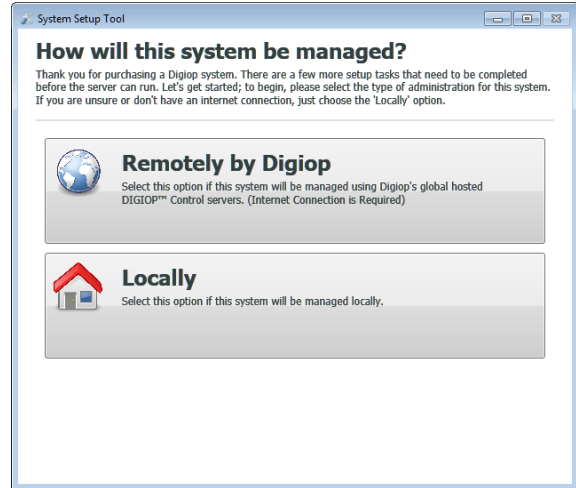
# 5 Configure DIGIOP® Server

Continue this installation procedure using the following steps.

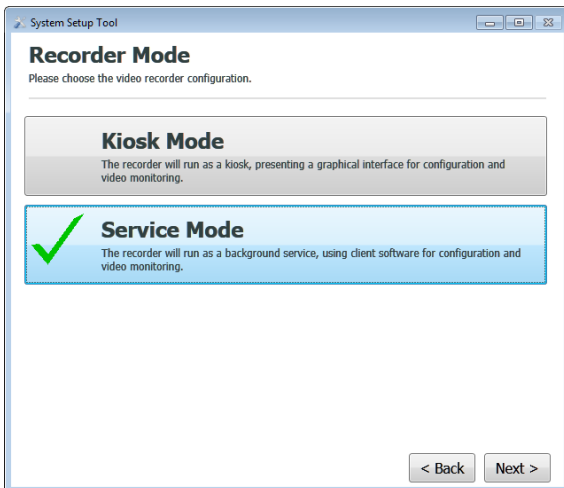
- A. In the **How will this system be managed?** window, click either **Remotely by Digiop**, or **Locally**, whichever applies. For this procedure, **Locally** is selected.

If your system will be managed remotely by DIGIOP®, all system configuration settings are saved on the DIGIOP® cloud-based centralized management site: *elements.digiop.com*. The login to your server is done through that system, and Internet access is required.

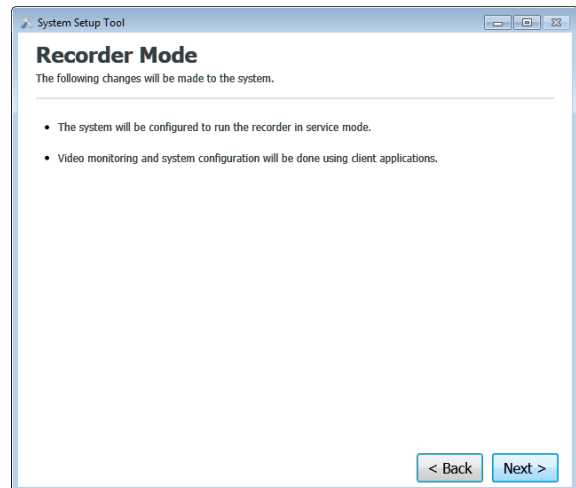
If you are managing your system locally, all configuration settings are saved on your DIGIOP® Server.



- B. In the **Recorder Mode** window, click **Service Mode** (IP cameras only), then click **Next**.

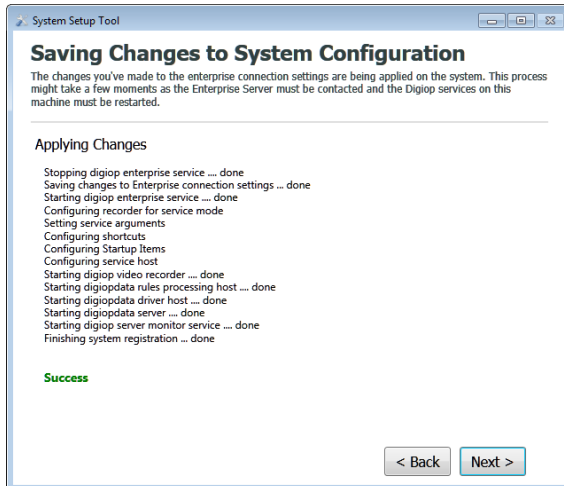


- C. Check the entries in the **Recorder Mode** summary window, then click **Next**.

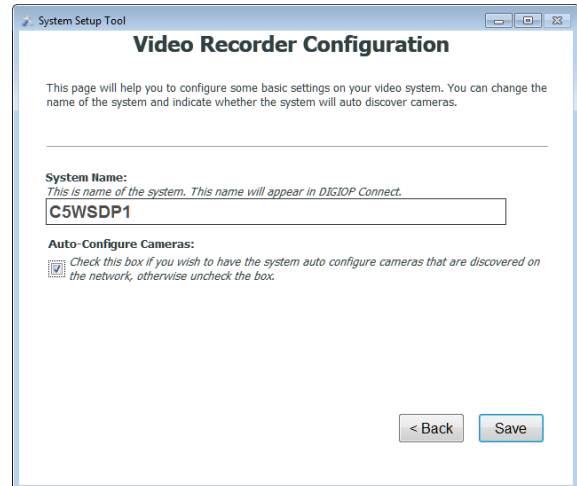




- D. Allow the configuration utility make changes to your server. Inspect the list of changes to ensure that all processes completed successfully, then click **Next**.



- E. Enter a **System Name** for your DIGIOP® Server in the **Video Setup** window. The system name defaults to the Full Computer Name within your operating system.

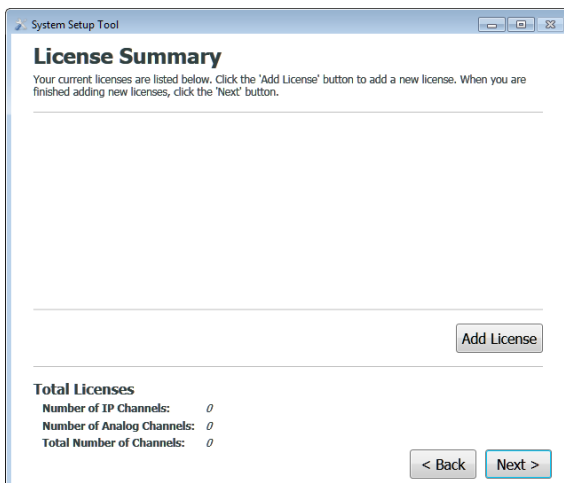


Also, check the box for **Auto-Configure Cameras**. If DIGIOP ELEMENTS™ supported IP cameras are installed on the network with your DIGIOP® Server, they are automatically added to the system. Click **Save** to continue.

## 6 Activate DIGIOP ELEMENTS™ Licenses

Before using your DIGIOP ELEMENTS™ server, you must activate your software licenses. License IDs and passwords for your system can be found inside the case with your Application disk. Additional licenses for IP camera channels and data features, if needed, can be added later.

- A. In the License Summary window, click **Add License**.

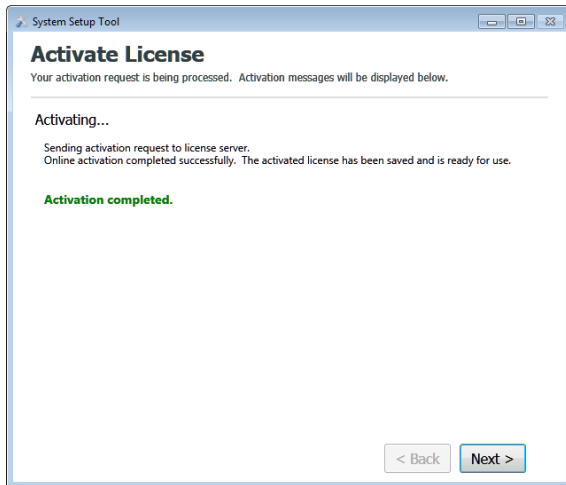


- B. To activate the Base License, enter the **License ID** and **Password** assigned to you. Click either **Activate License Online** (requires internet access) or **Activate License Manually** then and follow the on-screen instructions. In this procedure, licenses are activated Online.

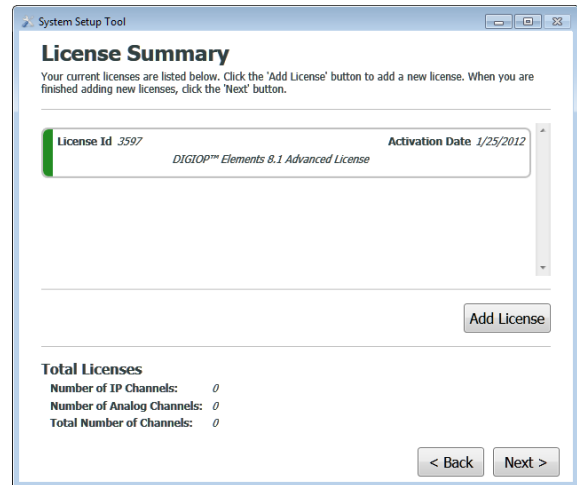




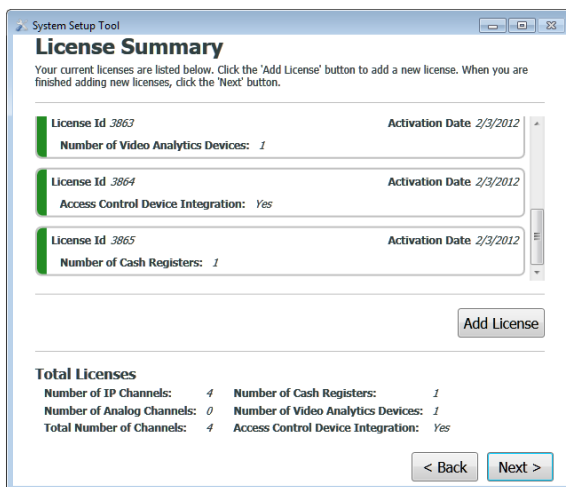
C. After the license information you entered is activated, the Activate License window will show the **Activation completed**. Online license activation usually occurs in less than 10 seconds. Click **Next**.



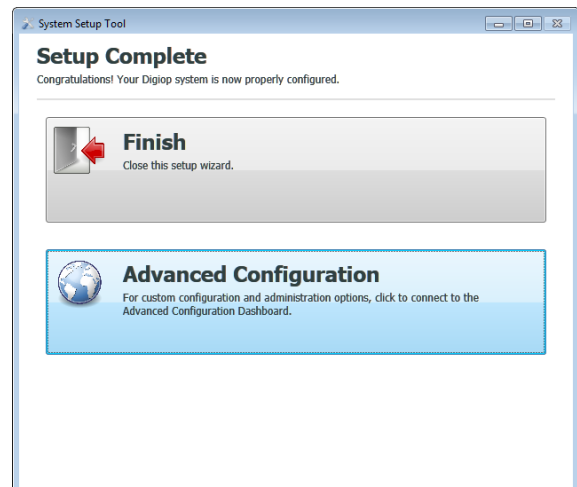
D. The License Summary window will open, showing the License ID, Activation Date and Total Licenses data (see below). If you have additional licenses for your system, click **Add License** and repeat this procedure for each.



E. After entering all the license information, click **Next** to continue.



F. After all licenses you entered are activated, click **Advanced Configuration** to verify the functionality of your DIGIOP® Server. Otherwise, click **Finish** and continue with the next steps after all your licenses are activated.





## 7 DIGIOP® Server localhost Verification

- A. To quickly verify that the DIGIOP® Server is running after your licenses are activated, click **Advanced Configuration** from the **Setup Complete** window (see previous step), or, on your DIGIOP® Server system, open the Microsoft Internet Explorer browser, then go to URL: <http://127.0.0.1/Digiop>. The following window will open.



- B. In the DIGIOP® Control login window, enter the Username and Password for your server, then click **Login**. If you configured your system to be managed “Locally”, enter the default Username and Password, **admin** and **admin**, and the default Customer name, **Digiop**.

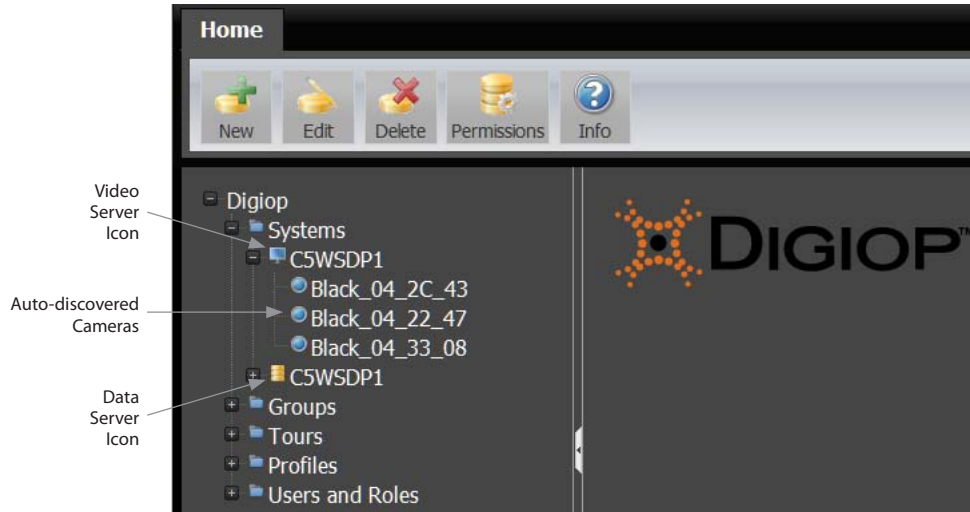
If you configured your server to be managed “Remotely by DIGIOP®”, enter the Username, Password, and the Customer name assigned to you by DIGIOP®. If you did not receive a customer name from DIGIOP®, contact DIGIOP® Support.



The appearance of the object tree in the left frame of the DIGIOP® Control window indicates that your DIGIOP® server is functional.



- C. If IP cameras were installed on your network before installing the DIGIOP® Server components and you opted to auto-discover them during the server installation, find the **Systems** entry in the left frame, then click the “+” box in front of it to open its objects list. Similarly, click the “+” box in front of the Video server icon for your system. The cameras auto-discovered by the DIGIOP® Server will be listed below it. (NOTE: Additional cameras can be added later.)



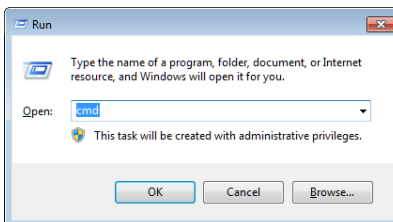
To add cameras manually, click the video server icon, then click the **New** button and select the camera you want to install. Refer to the **DIGIOP® Control QSG** documentation provided on the installation DVD for more information.

- D. Close the DIGIOP Control connection by clicking the **Log Off** button in the upper right corner of the window.

## 8 DIGIOP® Server Remote Connection

If your DIGIOP® Server is accessible across a local network and you will be provisioning the server remotely, perform this step that to verify that you can access DIGIOP® Control remotely.

- A. Determine the IP address of your DIGIOP® Server.
- At you DIGIOP® Server, click the Microsoft Windows start button and select **Run**.
  - In the Run window, enter **cmd** in the entry field, then click **OK**.



- In the Command Prompt window, enter **ipconfig** at a prompt to display the machine’s network settings. Use IPv4 Address (in Windows 7), or IP Address (in Windows XP) to address your server across the local network.



```
Administrator: C:\Windows\system32\cmd.exe
C:\Users\Digiop>ipconfig
Windows IP Configuration

Ethernet adapter Local Area Connection:

    Connection-specific DNS Suffix  . : 
    Link-local IPv6 Address . . . . . : fe80::9077:d5f9:b03:b525%10
    IPv4 Address. . . . . : 192.168.5.11
    Subnet Mask . . . . . : 255.255.255.240
    Default Gateway . . . . . : 192.168.5.1

Tunnel adapter isatap.{818FB071-63C5-4E00-9D4F-24DE04EC7AD0}:

    Media State . . . . . : Media disconnected
    Connection-specific DNS Suffix  . : 

Tunnel adapter Teredo Tunneling Pseudo-Interface:

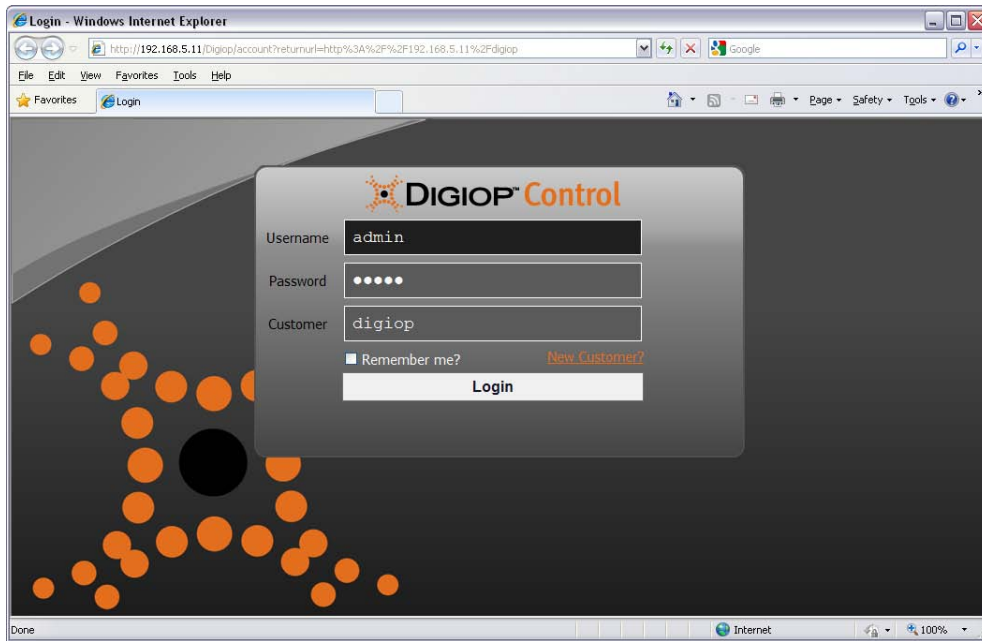
    Connection-specific DNS Suffix  . : 
    IPv6 Address. . . . . : 2001:0:4137:9e76:c7f:36b:3f57:fa44
    Link-local IPv6 Address . . . . . : fe80::c7f:36b:3f57:fa44%19
    Default Gateway . . . . . : 

C:\Users\Digiop>
```

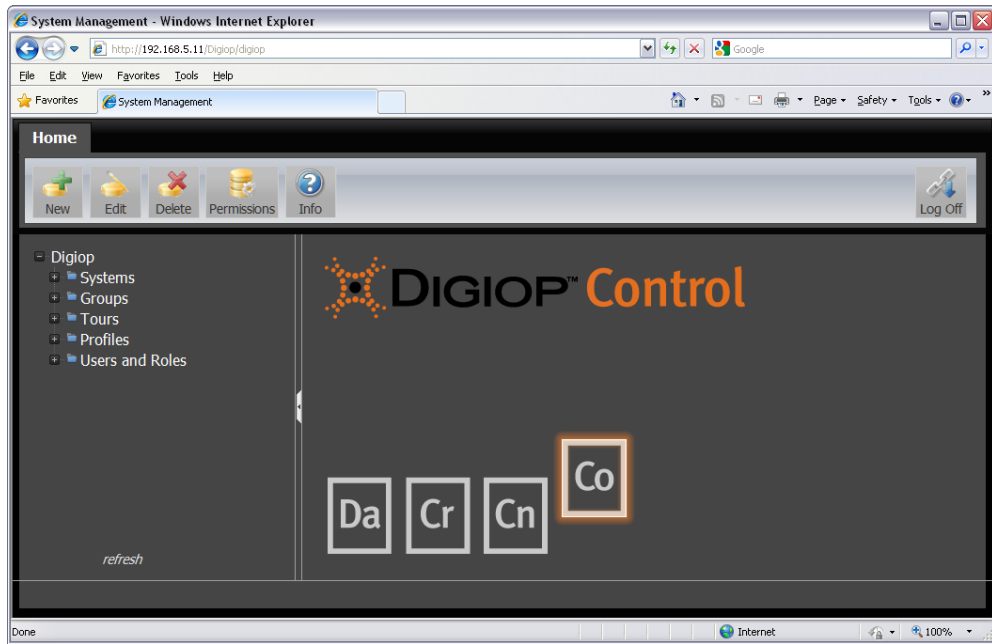
ipconfig Command

IPv4 Address

- B. At a different Microsoft Windows computer on the same local network as your DIGIOP® Server, open Microsoft Internet Explorer (IE) browser and go to URL: <http://<IPv4 address of the server>/Digiop>. Using the example above, the <IPv4 address of the server> is 192.168.5.11. This address would form the URL: <http://192.168.5.11/Digiop> The following screen will appear.



In the Login window, enter a Username and Password, and Customer name. The system default (for locally managed systems) Username and Password is **admin** and **admin**. The default Customer name is **digiop**. The DIGIOP® Control window will appear.



To close the connection to DIGIOP® Control, click the **Log Off** button in the upper right corner of the screen.

## 9 Install DIGIOP® Connect

DIGIOP® Connect is a remote client that can be installed on a Microsoft Windows PC that can access the DIGIOP® Server across a network. To install DIGIOP® Connect:

- A. Load the DIGIOP ELEMENTS™ Application disk into a DVD drive on Microsoft Windows PC. The following window will open.



If your DVD drive is not configured to autorun disks, or the window above does not appear, open a file explorer and double click on the DVD file named **runApplicationCD.exe**.

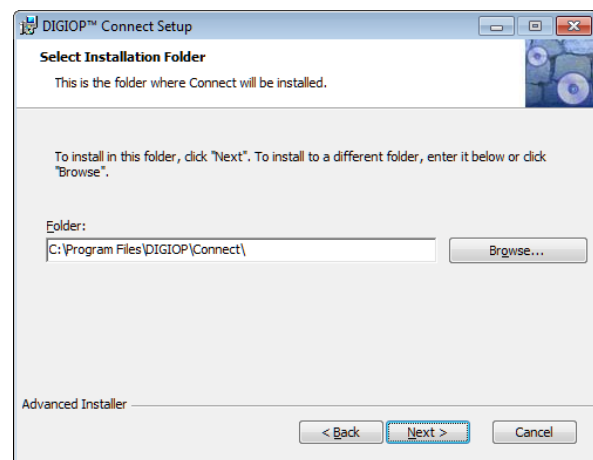


- B. Click the **Install Software** bar to open the menu.
- C. Click the button labeled **DIGIOP® Connect** to highlight it, then click the **Install DIGIOP® Connect** button.



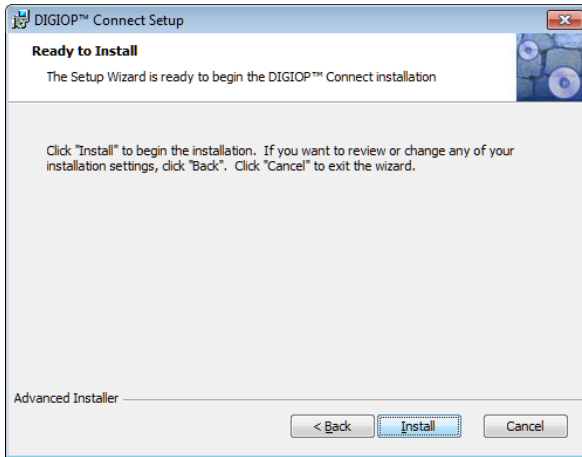
## 10 Run the DIGIOP® Connect Setup Wizard

- A. After extracting the main application files, the installer will open the **DIGIOP® Connect Setup Wizard**. Click **Next** to continue.
- B. In the **Select Installation Folder** window, click the **Browse** button to locate the preferred installation location, then click **Next** to continue.

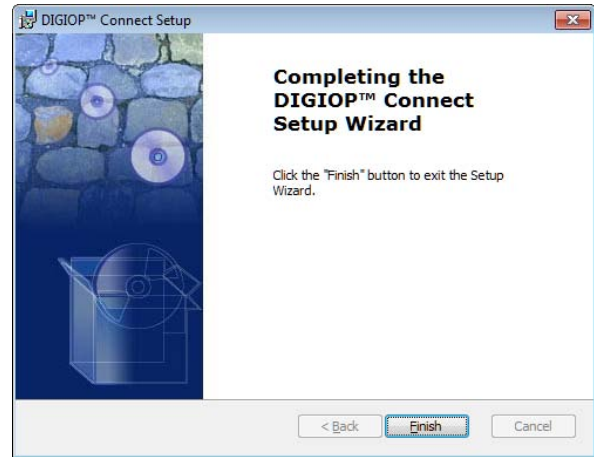




- C. In the **Ready to Install** window, click **Install** to continue.



- D. In the **Completing the ... Setup Wizard** window, click **Finish**. A DIGIOP® Connect icon will appear on the desktop and an entry will be included in the Start menu programs list.



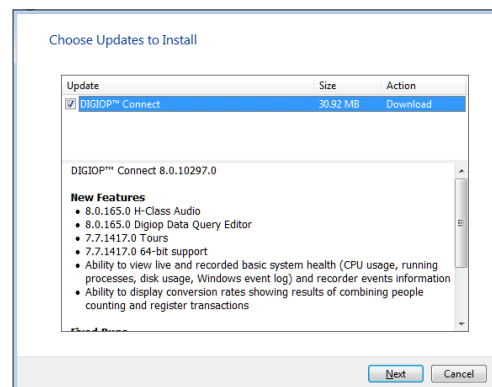
## 11 Connect with DIGIOP® Connect

- A. Start DIGIOP® Connect by double clicking the icon on the desktop or by using the entry in the start menu program list.



**NOTE:** When DIGIOP® Connect starts, it checks to see if a newer version is available for download. If so, an update window opens. DIGIOP® recommends that you always install the newest version of DIGIOP® Connect when the opportunity becomes available.

To install the update, click **Next**, then follow the on-screen instructions to download the new version and reinstall DIGIOP Connect (see step 10 above).





**B.** In the DIGIOP® Connect login window, do the following:

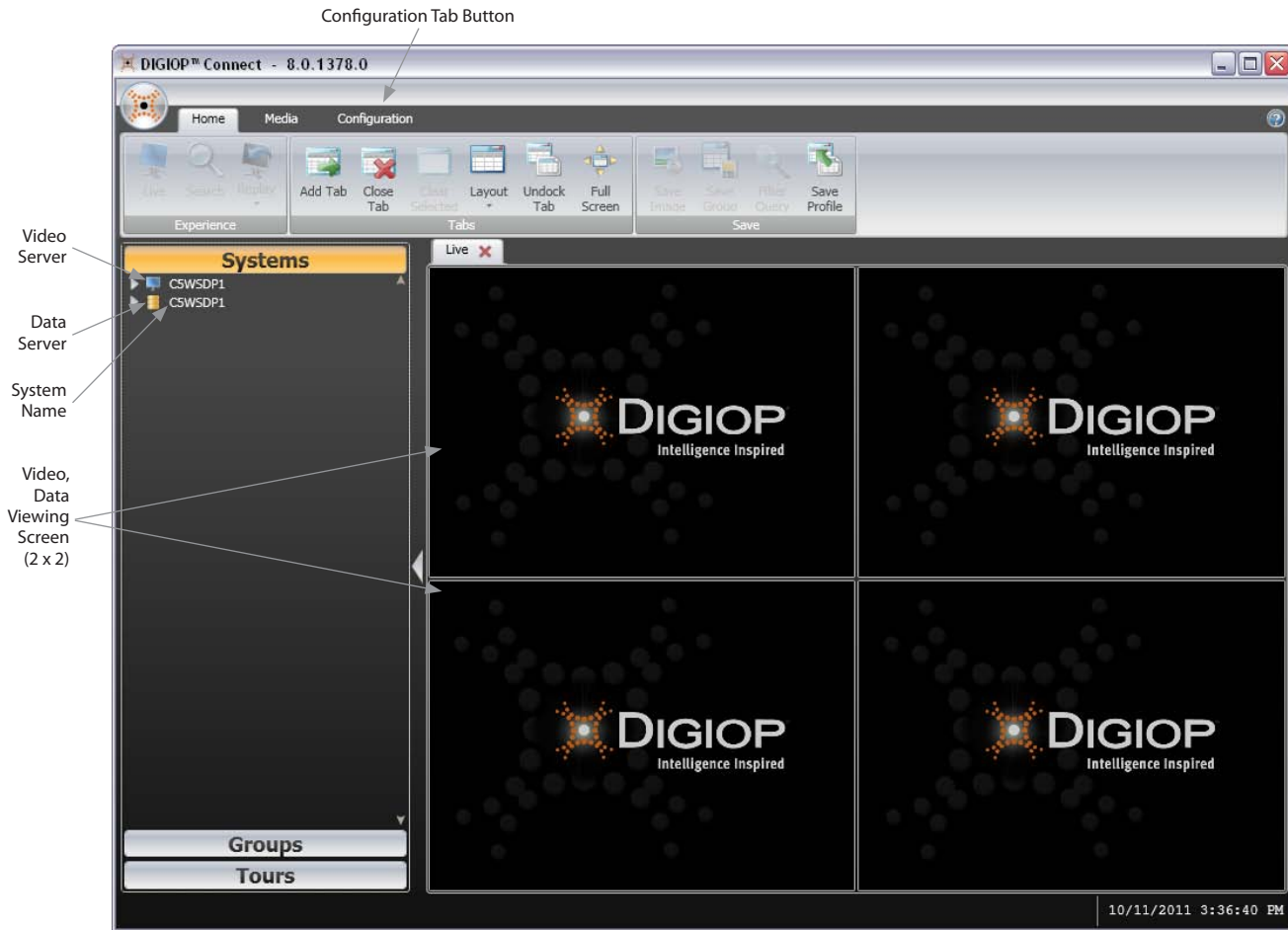
- If your server is managed “Locally”:
  - Enter your Username and Password in the appropriate fields. The default Username and Password for your DIGIOP® Server are **admin** and **admin**.
  - Open the Site drop down list and select **Other**, then overwrite “Other” with the IP address of your server. In the example above (see step 8), the IP address of you server is 192.168.5.11.
  - In the Customer field, enter “**digiop**” (lower case). See the example below.

The screenshot shows the DIGIOP Connect login interface. At the top, it says 'DIGIOP Connect' and 'Please login to continue'. Below this are five input fields: 'Username:' containing 'admin', 'Password:' containing four dots, 'Site:' containing '192.168.5.8', 'Customer:' containing 'digiop', and 'Language:' containing 'English (United States)'. At the bottom of the form is a 'Login' button.

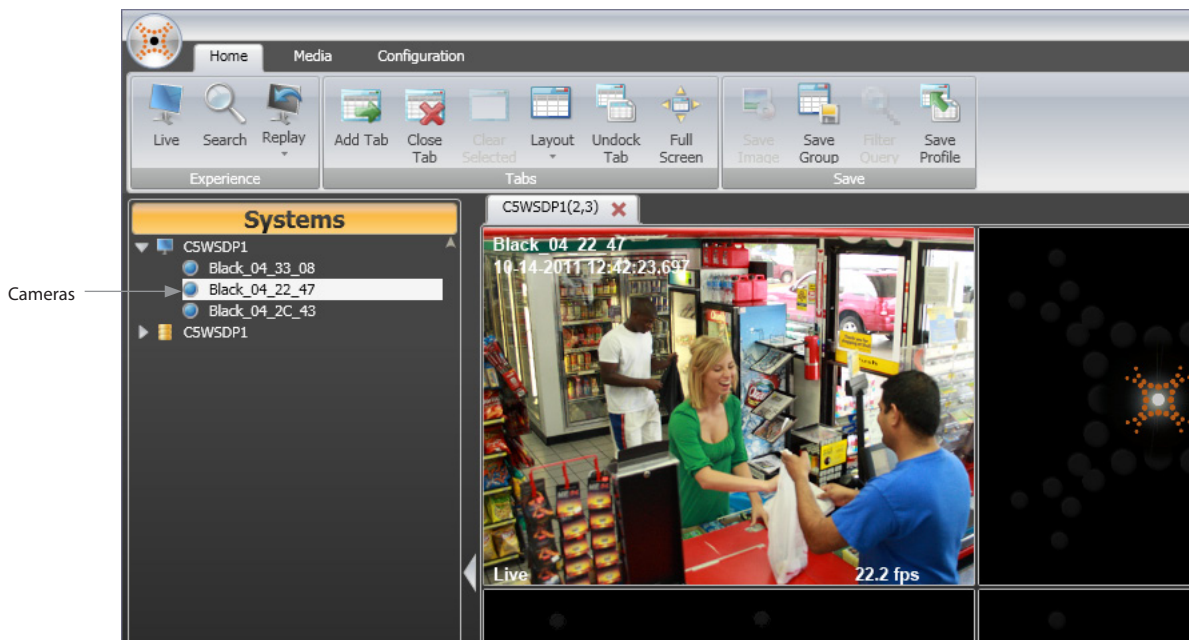
- If your server is managed “Remotely by DIGIOP®”:
  - In the Site field, open the drop down list, then select *elements.digiop.com*.
  - Enter the Username, Password, and Customer name assigned to you by DIGIOP®.
- Click the **Login** button to connect to your server.

**NOTE:** Depending on the network settings of the DIGIOP® Server and the configuration of your network (i.e. how you connect to the server from your remote PC), other login options may be required. For additional information, refer to the DIGIOP® Connect User Manual provided in the Documentation section of the installation disk.

**C.** When the DIGIOP® Connect main window opens, two icons will usually appear in the left frame. These two icons represent the Video server and the Data server components of the DIGIOP® Server you connected to. The name associated with these icons is the name you assigned to your server, or the Full Computer Name of your Windows operating system. **NOTE:** If the Video and Data Server icons don’t appear, click the **Configuration** tab button, then click **Refresh** every 5 seconds until they appear.

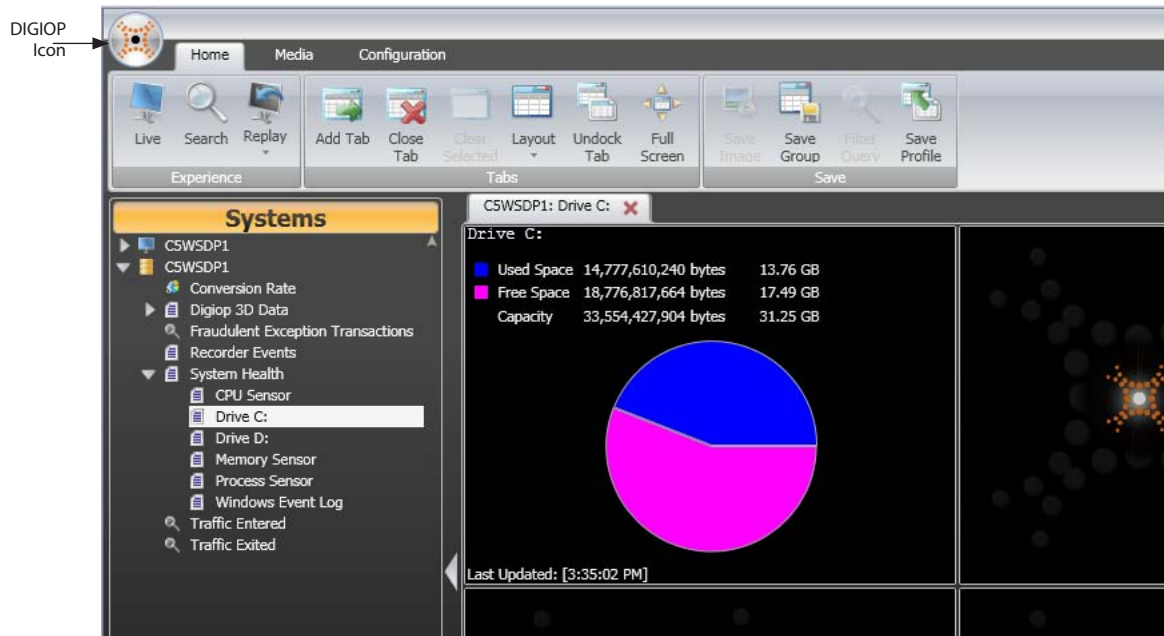


- D. If IP cameras were added to your DIGIOP® Server, open the Video Server object tree by clicking the triangle to the left of the Video Server icon. The objects listed under the Video Server are the IP cameras configured on your server.
- E. Drag and drop one of the camera entries into one of the viewing screens.





- F. If the previous step showed a live video image from your camera, you have successfully accessed live video from your DIGIOP® Video Server through DIGIOP® Connect.
- G. Open the Data Server object tree by clicking the triangle to the left of the Data server icon. Similarly, open the System Health group under the Data Server. (See the screen below.)
- H. In the System Health group, find the **Drive C:** entry. Click the **Drive C:** entry, then drag and drop it into one of the viewing screens.



- I. If the previous step showed a pie-chart with Drive C: usage data, you have successfully accessed data from your DIGIOP® Data server through DIGIOP® Connect.
- J. Click the DIGIOP® icon in the upper-left corner of the window, then click **Logout** to disconnect from the DIGIOP® Server.

