

# **DIGIOP™ XE Chassis Hardware Quick Start Guide**

Video and Data Management Systems



**DIGIOP™ XE Chassis for EH, EI Series Systems**

**Congratulations on your new DIGIOP™ Video and Data Management System.**

This guide provides setup instructions for your server hardware.

For more information, contact DIGIOP™ Support at

877.972.2522 Toll Free • [support@digiop.com](mailto:support@digiop.com) • [www.digiop.com](http://www.digiop.com)



# 1. Getting Started

## Unpacking the Contents

The following are included with your system. Please inspect these and the other system components while unpacking.

- Quick Start Guide
- Surge Protection Notice
- Mouse/Keyboard
- Video Input Cables (EH Series systems only)
- RS232 PTZ Control Cable
- Application DVD
- Recovery DVDs
- Power Cord

## Choose a Proper Location

Select a location for the system that meets the following requirements.

**Notice:** Excessive heat can shorten the life of electronics.

- Adequate ventilation to avoid excessive heat (climate controlled environment)
- Uninterrupted Power Supply (UPS)
- Moisture-free environment
- A place away from direct sunlight
- An area with minimal dust or debris

## Site Installation

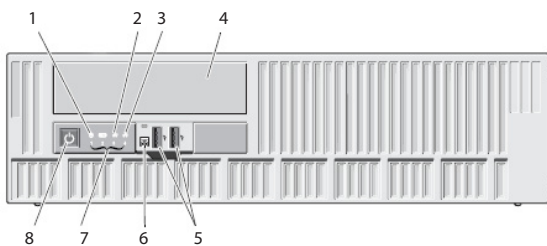
Hardware Setup – Connect all input devices and external peripherals to the system. Please refer to the diagrams in regard to what should be connected to your system.

- |                              |                       |                                     |
|------------------------------|-----------------------|-------------------------------------|
| • Indoor & Outdoor Camera(s) | • Audio in            | • Keyboard                          |
| • VGA Monitor                | • Speakers - Optional | • Relays and I/O                    |
| • Spot Out Monitor           | • Ethernet            | • Cash Register (RS 232) - Optional |
| • PTZ Camera(s) - Optional   | • Mouse               | • Power Cord                        |

**Notice:** For proper indoor and outdoor cameras an in-line surge suppressor or equivalent should be used to reduce exposure to surges and lightning strikes.

# 2. About Your System

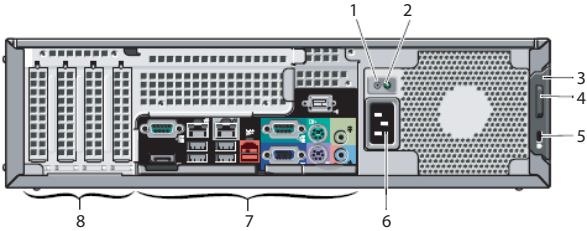
## Front View



- |                           |                                    |
|---------------------------|------------------------------------|
| 1. Drive activity light   | 6. External power button connector |
| 2. Network activity light | 7. Diagnostic lights (4)           |
| 3. Network activity light | 8. Power button, power light       |
| 4. DVD drive bay          |                                    |
| 5. USB 2.0 connectors (2) |                                    |

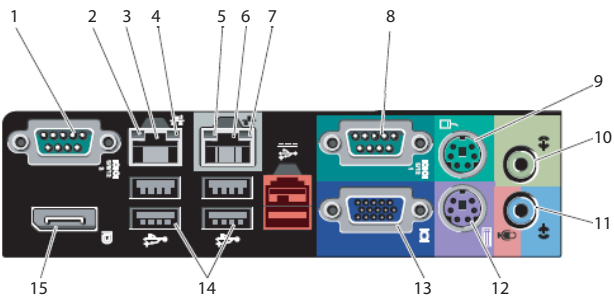


## Back View



- |                                   |                                      |
|-----------------------------------|--------------------------------------|
| 1. Power supply diagnostic button | 5. Security cable slot               |
| 2. Power supply diagnostic light  | 6. Power cable connector             |
| 3. Cover release latch            | 7. Back-panel connectors (see below) |
| 4. Padlock rings                  | 8. Expansion-card slots (4)          |

## Back Panel Connectors



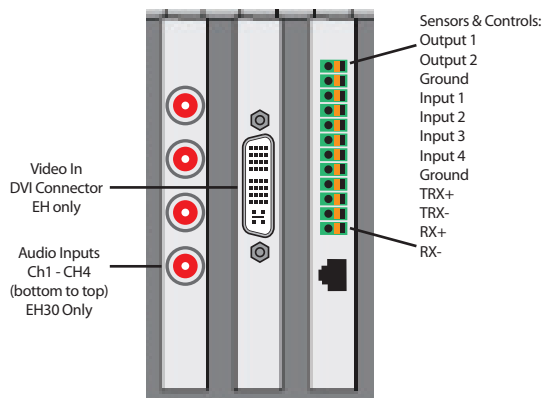
- |                           |                             |
|---------------------------|-----------------------------|
| 1. Serial connector       | 9. PS/2 mouse connector     |
| 2. Link-integrity light   | 10. Line-out connector      |
| 3. Network connector      | 11. Line-in connector       |
| 4. Network activity light | 12. PS/2 keyboard connector |
| 5. Link-integrity light   | 13. VGA video connector*    |
| 6. Network connector      | 14. USB (4)                 |
| 7. Network activity light | 15. DisplayPort connector*  |
| 8. Serial connector       |                             |

**\*NOTICE:** Using the DisplayPort for video may require an optional adapter to connect to older monitors which only support VGA and/or DVI (available at [www.dell.com](http://www.dell.com)).

When connecting to a DisplayPort monitor or adapter, multi-monitor capability of the system is not be available during boot or when running DOS. Output will be limited to the DisplayPort monitor only. When the system is booted to Windows and the graphics driver is loaded, multi-monitor support will be fully functional.

## Expansion-card Slots

**EH Series Systems Expansion-card Slots**

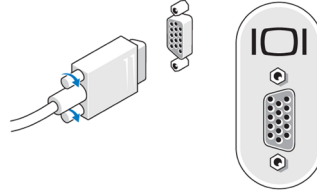


**EI Series systems:** No expansion cards are included.

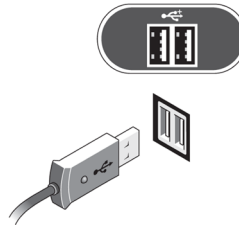


### 3. Setting Up Your System

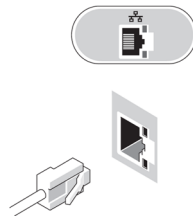
1. Connect the monitor using a VGA cable.



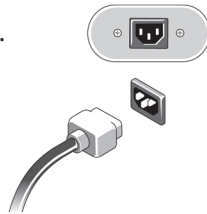
2. Connect a USB device, such as a keyboard or mouse.



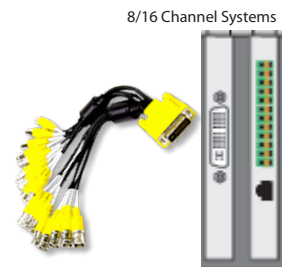
3. Connect the network cable.



4. Connect the power cable(s).



5. For hDVR systems, connect the video adapter cable(s) to the video capture board.



6. Press the power buttons on the monitor and the computer.

