

DIGIOP™ Connect Software Quick Start Guide

This document guides you through the basic steps to install and use basic features of DIGIOP™ Connect software. DIGIOP™ Connect runs on Microsoft® Windows® XP Professional with SP2, Windows Vista, and Windows 7. For detailed instructions, refer to the user manual.

Step 1. Installation

During the installation process, essential software components (Microsoft .NET Framework 4) may also be downloaded and installed.

- DIGIOP™ Connect is provided on the Application disk included with your NVR/hDVR hardware. Insert the disk in your computer DVD drive and allow it to open.
- Click the button to install DIGIOP™ Connect.
- Follow the installation prompts to install DIGIOP™ Connect on your computer. After you click **Finish**, the DIGIOP™ Connect icon will appear on the desktop and in the Windows Start Menu.

Step 2. Log in

Double click the **DIGIOP™ Connect** icon on the desktop or in the Windows Start Menu to launch the software.



To connect to a local NVR/hDVR, in the Site drop-down menu select **(local)**, click the **Login** button at the bottom of the dialog box, and continue with Step 3 below.

For additional Site login options, including the **elements.digiop.com** (DIGIOP™ hosted) and **other** (single system connection), refer to the *DIGIOP™ Connect User Manual* or the embedded help system.

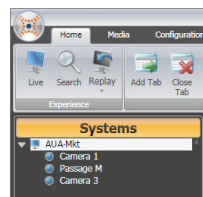
NOTE After logging in, DIGIOP™ Connect will automatically check for software updates.

Step 3. Configure

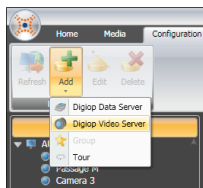
When DIGIOP™ Connect is launched for the first time, you are prompted to add a video or data source. Enter the IP address, username, password, and a name for device. Click **Save** to add this new video source to your Source Management tab.



Your video server will now appear in your Systems list in the left panel. Click the triangle next to the system name to open a list of cameras associated with it.



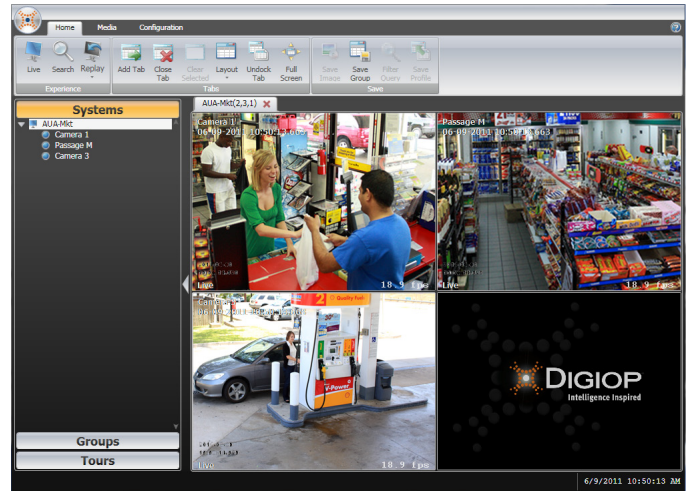
To add another video or data server, click the **Configuration** tab, then click the down arrow on the **Add** icon. Select **Digiop Video Server** from the drop down list and enter essential information to identify the DVR.



Step 4. View Video

Cameras

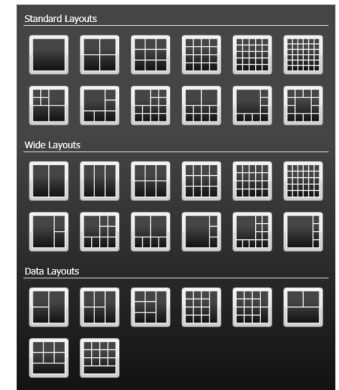
To view live video from a camera, select a camera listed in the left frame, then click the Live button. Or, drag a camera listed in the left frame into a viewing pane. To view all of the cameras on a video server, drag the video server name into a viewing pane.



Layout Options

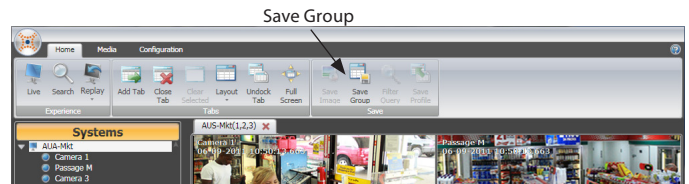
You can create layouts that fit your specific needs. Multiple tabs can be setup, with 2x2 frame grids to layouts for up to 36 cameras.

To select a layout, click the **Home** tab at the top of the DIGIOP™ Connect window, click the down arrow on the **Layout** icon, then click the layout pattern you want to use.



Step 5. Create Groups

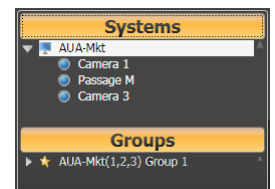
To create and save a custom viewing layout along with specific cameras in that layout, click the **Save Group** button in the top menu.



Enter a name in the **Group Name** field, then click **Save**.



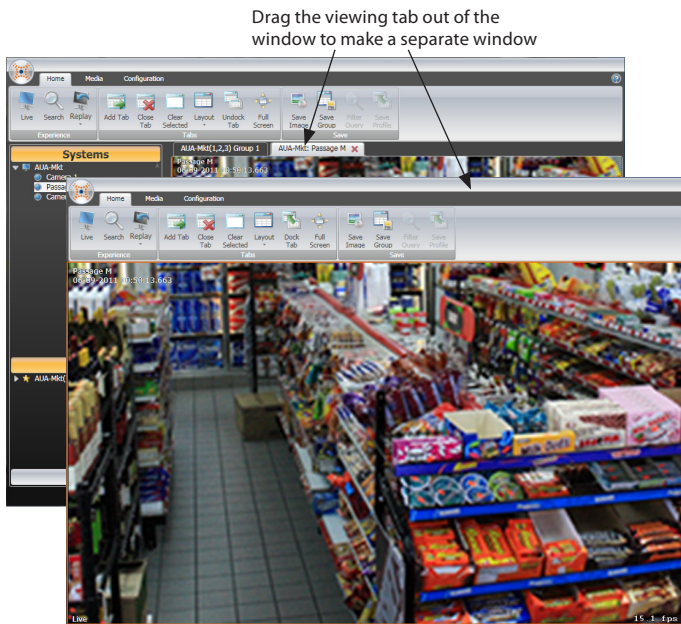
To see the cameras in the list, click the **Groups** title bar, then click the triangle to the left of the group name you created. You can create Groups with different layouts and cameras.



To view the layout from a Saved Group, drag the Group name to a frame on a tab.

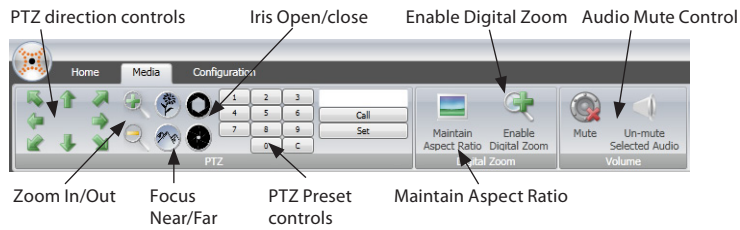
Multi-Monitor Support

Tabs in DIGIOP™ Connect can be undocked for multi-monitor/window displays. Click the **Undock/ Dock** button or click and drag the tab away from the main panel onto another area of the display, or to a secondary monitor. To re-dock a tab, click **Dock** again.



Step 6. Camera Remote Controls

With the DIGIOP™ Connect Media tab you can control PTZ, digital zoom and lens functions, and Audio functions if the camera provides remote control of those features. Click the **Media** tab. The buttons enabled reflect the features of the camera selected.



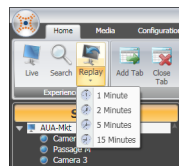
Click the frame of the camera you wish to adjust. A blue border surrounds the frame that is selected.

Step 7. Search Video

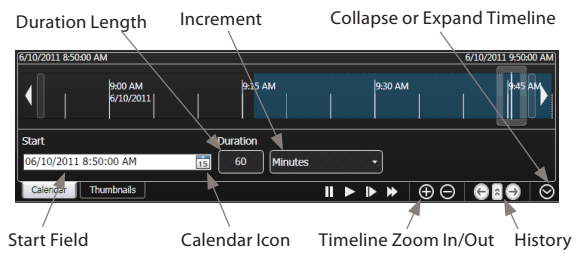
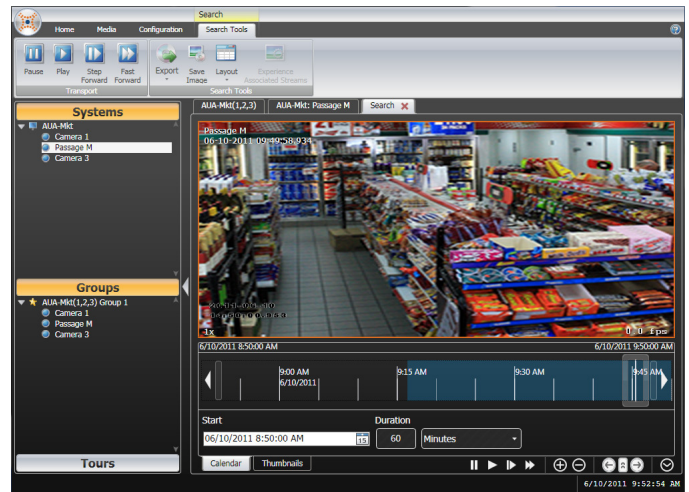
DIGIOP™ Connect provides three basic ways to search recorded video from cameras connected to your NVR/hDVR: Replay, Calendar, and Thumbnail. When you click Replay or Search, a new tab is created for that purpose, enabling you to review and compare live and recorded video simultaneously.

Standard Play, Pause, and Fast Forward buttons help you quickly find the video you need.

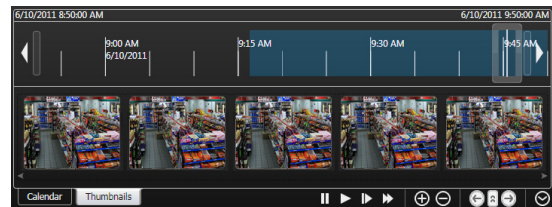
Replay – With Replay search you can opt to replay the previous 1, 2, 5, or 15 minutes of recorded video.



Calendar (Timeline) search – Calendar search allows you to review video recorded during a specific increment of time.



Thumbnail search – Thumbnails search presents up to 10 thumbnails of video frames, spaced across a defined time range, to help locate the detail or event of interest.



Step 8. Export video

After identifying an image or video clip, use the **Save Image** and **Video Export** tools to convert and save your selected image or video clips in commonly used formats.

