

## Loss Prevention Quick Start Guide

### How to Login

1. Enter Credentials

Username: \_\_\_\_\_

Password: \_\_\_\_\_

Site: elements.digiop.com

Customer: \_\_\_\_\_



2. Click Login

### How to View Live Video

1. Click the dropdown arrow next to the store name

2. Click on a camera

3. Click Live  
- That camera will display



Tip: Click on the store name then click Live  
- All cameras from that store will display





## How to Search Recorded Video

1. Click on a camera

2. Click Search  
- That camera will display

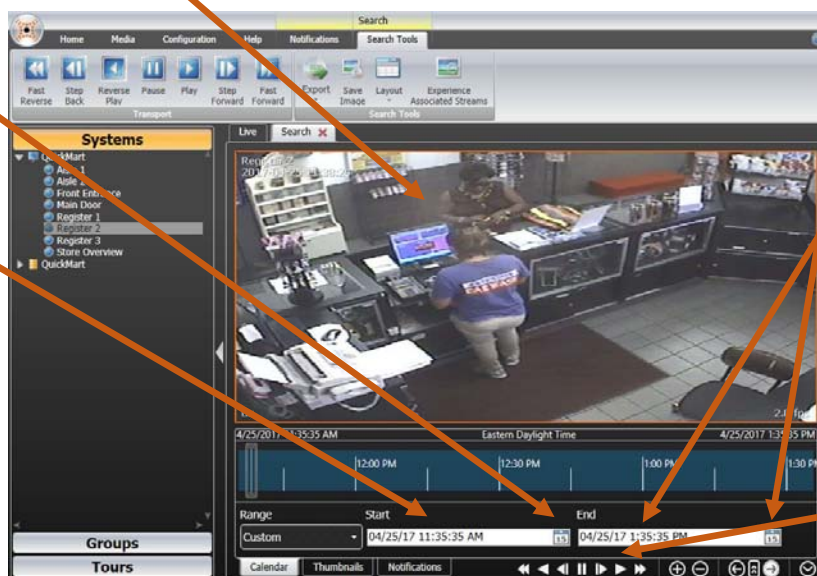
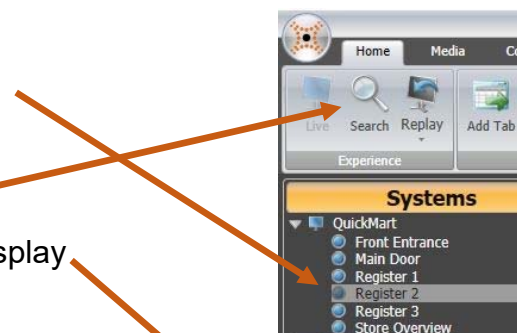
3. Click on the calendar to enter the start date

4. Type in the start time

5. Click on the calendar to enter the end date

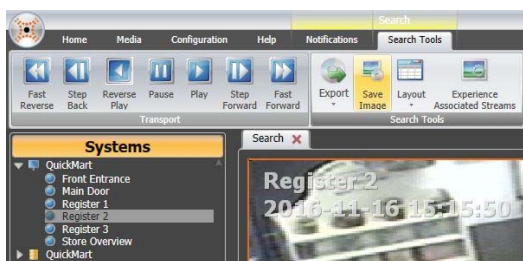
6. Type in the end time

7. Click to playback (Fast Forward, Fast Reverse, etc.)



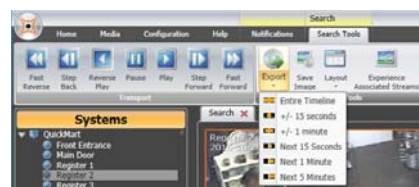
8. Review Video, Save an Image or Export if needed

## How to Save Images

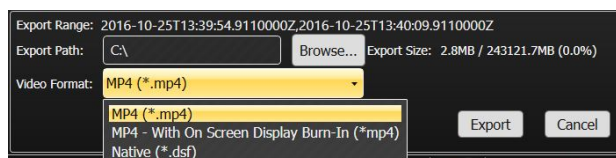


1. Click Save Image
2. Browse to the desired folder
3. Click Save

## How to Export Video



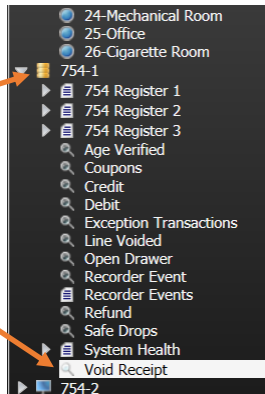
1. Click Export and select an export length
2. Browse to the desired folder
3. Select Video Format (usually MP4)
4. Click Export





## How to Search POS Data with Video

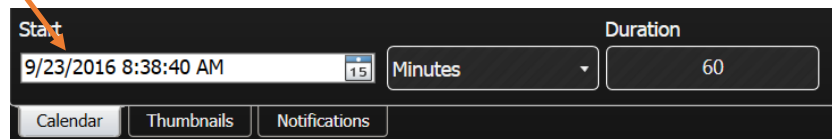
1. Click on a Point of Sale Query (looks like magnifying glass) or choose a Register



2. Click on Search



3. Choose Date and Duration



4. Click Experience Associated Streams

5. Click top of Transaction and playback will start

To expand transactions, toggle the arrow icon and view full transaction data

The screenshot shows the main application interface. On the left is a 'Systems' tree view with various locations listed. The top toolbar contains navigation and search tools, with 'Experience Associated Streams' circled. The central pane shows search results for 'Void Receipt' on 2016-09-23, listing transactions with expand/collapse arrows. The right pane shows a video feed from 'Camera 01' with a timestamp of 04-04-2016 Mon 16:04:41.



## Additional POS Search Tools

POS Data can also be filtered further with the “Cash Register” Search tool

1. Make sure the Data Window has been selected and has an orange border around it

2. Choose Cash Register at the bottom of the screen

Date	Time	Status	Reg	Cashier	Total	Tender	Change
07/31/2018	08:45:40	Complete	16538	Garfunkle	\$169.52	\$169.52	
07/31/2018	08:51:08	Complete	16540	Garfunkle	\$83.61	\$100.00	(\$16.39)
07/31/2018	08:57:43	Complete	16544	Garfunkle	\$210.17	\$211.45	(\$1.29)
07/31/2018	09:02:00	Complete	16546	Garfunkle	\$85.58	\$90.00	(\$4.42)
07/31/2018	09:04:57	Complete	16549	Garfunkle	\$36.17	\$36.17	
07/31/2018	09:08:52	Complete	16551	Garfunkle	\$120.82	\$120.82	
07/31/2018	09:13:46	Complete	16553	Garfunkle	\$55.47	\$60.00	(\$4.53)
07/31/2018	09:20:40	Complete	16557	Garfunkle	\$165.95	\$165.95	
07/31/2018	09:26:05	Complete	16560	Garfunkle	\$561.85	\$561.85	
07/31/2018	09:33:08	Complete	16564	Garfunkle	\$65.26	\$65.26	
07/31/2018	09:36:32	Transaction Void	16566	Garfunkle	(\$78.71)		(\$78.71)
07/31/2018	09:40:07	Complete	16568	Garfunkle	\$506.13	\$506.13	
07/31/2018	09:46:12	Complete	16573	Garfunkle	\$245.81	\$245.81	
07/31/2018	09:51:34	Complete	16576	Garfunkle	\$180.15	\$180.15	
07/31/2018	09:57:33	Complete	16579	Garfunkle	\$18.74	\$18.74	
07/31/2018	10:00:35	Complete	16580	Garfunkle	\$453.55	\$466.78	(\$13.22)
07/31/2018	10:05:31	Complete	16584	Garfunkle	\$209.10	\$209.10	
07/31/2018	10:12:50	Complete	16587	Garfunkle	\$34.17	\$34.17	
07/31/2018	10:15:50	Complete	16589	Garfunkle	\$41.80	\$41.80	
07/31/2018	10:20:19	Complete	16591	Garfunkle	\$16.02	\$20.00	(\$3.98)

Cashier: Garfunkle  
Transaction Type: Return  
Text Search: milk

Calendar | Thumbnails | **Cash Register** | Notifications

From Here you can filter by:

- Cashier
- Transaction Type (ex: Void, Refund, Return)
- Text Search: Type any item or key word you would like to search for and it will filter transactions for that text

If you would like to learn more about the full capabilities of the DIGIOP software, visit [digiop.com](http://digiop.com) for the full manuals, video tutorials, how-to's, and help topics.